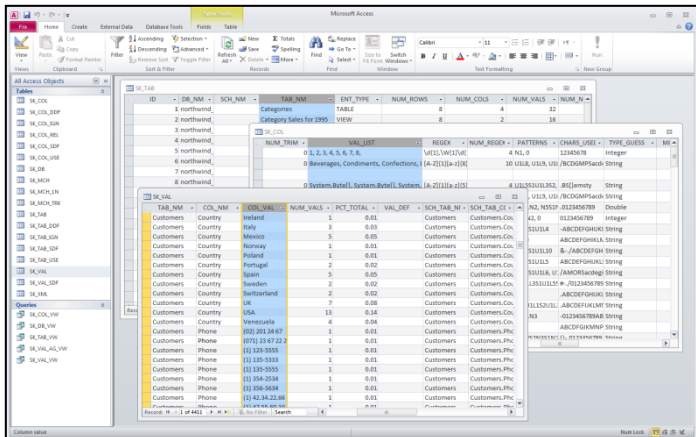


# ScribeKey Data Profiler

## Describe Contents, Measure Quality, Track Change



TAB_NM	COL_NM	COL_VAL	MCH	NUM_ROWS	PCT_TOTAL
Customers	Country	Argentina	Y	3	0.03
Customers	Country	Austria	Y	1	0.01
Customers	Country	Belgium	Y	2	0.02
Customers	Country	Brazil	Y	8	0.09
Customers	Country	Canada	Y	3	0.03
Customers	Country	Denmark	Y	2	0.02
Customers	Country	Finland	Y	2	0.02
Customers	Country	France	Y	11	0.12
Customers	Country	Germany	Y	11	0.12
Customers	Country	Ireland	Y	1	0.01
Customers	Country	Italy	Y	3	0.03
Customers	Country	Mexico	Y	5	0.06
Customers	Country	Norway	Y	1	0.01
Customers	Country	Poland	Y	1	0.01
Customers	Country	Portugal	Y	2	0.02
Customers	Country	Spain	Y	5	0.06
Customers	Country	Sweden	Y	1	0.01
Customers	Country	Switzerland	Y	2	0.02
Customers	Country	UK	N	7	0.08
Customers	Country	USA	N	14	0.16
Customers	Country	Venezuela	N	4	0.04

**EXPLORE/DESCRIBE:** Capture table and view structure, contents, and meaning. Detail column values, indexes, keys, relationships, and more. Save profiles as easy-to-use and share database tables.

Profile SQL Server, Oracle, DB2, MySql, Postgres, SQLite, MS Access, dBase, MS Excel, and CSV data.

**MEASURE QUALITY:** Match sets of unique database column values against lookup tables or regular expressions.

ID	STATUS	FR_DB_NM	TO_DB_NM	SCH_NM	TAB_NM	COL_NM
1	ADDED	northwind_simple	northwind_simple_revision	Shippers	Contact_Name	
2	ADDED	northwind_simple	northwind_simple_revision	Shippers	Extension	
3	ADDED	northwind_simple	northwind_simple_revision	Shippers	Email	
4	ADDED	northwind_simple	northwind_simple_revision	Shippers	City	
5	ADDED	northwind_simple	northwind_simple_revision	Shippers	Country	
6	ADDED	northwind_simple	northwind_simple_revision	Customers	Extension	
7	ADDED	northwind_simple	northwind_simple_revision	Customers	Email	
8	ADDED	northwind_simple	northwind_simple_revision	Customers	Website	
9	ADDED	northwind_simple	northwind_simple_revision	Departments	DepartmentID	
10	ADDED	northwind_simple	northwind_simple_revision	Departments	DepartmentName	
11	ADDED	northwind_simple	northwind_simple_revision	Departments	Manager	
12	REMOVED	northwind_simple	northwind_simple_revision	Customers	Region	

Northwind\_Simple Tables

[Back to Databases](#)

NO	SCH_TAB_NM	ENT_TYPE	TAB_DEF
1	Categories	TABLE	
2	Category-Sales for 1995	VIEW	
3	Current Product List	VIEW	
4	CustomerNames	TABLE	
5	Customers	TABLE	
6	Employees	TABLE	
7	Invoices	VIEW	
8	Order Details	TABLE	
9	Order Details Extended	VIEW	
10	Order Subtotals	VIEW	
11	Orders	TABLE	
12	Product Sales for 1995	VIEW	
13	Products	TABLE	
14	Products Above Average Price	VIEW	
15	Quarterly Orders	VIEW	
16	Sales by Category	VIEW	
17	Shippers	TABLE	
18	Suppliers	TABLE	
19	Ten Most Expensive Products	VIEW	

**TRACK CHANGE:** Capture both schema and data contents changes between different versions of a database.

Built with .NET, ScribeKey's Data Profiler is an industrial strength, easy-to-use, batch command line application with a wide variety of configurable settings to help you focus in on getting the data metrics you need. Includes generic SQL command line utility for use with major database products.

Easy to use, affordable, and flexible. Get the important details on your data for your next application, data migration, integration, QA/QC, cleansing, or metadata project.

For application development, data production, data governance, data analysis, system integration, and data migration. Create a flexible foundation for master data management.

1 user license: \$200 USD (free for .edu)

3 user licenses and 4 hour training session: \$500 USD

**GET VENDOR SPECIFIC METADATA, GENERATE HTML DATA DICTIONARIES:** Get tabular metadata collections for your database product. Generate interlinked HTML data dictionaries with important schema and content metadata.

Also includes utilities to import/flatten XML data as well as convert tabular results between MS Access, MS Excel, HTML, XML, CSV, and RDB data stores.

Visit [www.scribekey.com](http://www.scribekey.com) to download your free copy. All tools are fully functional in the free version.

Comprehensive user guide provides tutorial and sample datasets and outputs, and use case workflows.

Training, project implementation assistance, and custom profiler and ETL development available.

